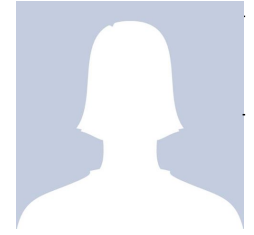


Brief CV



Personal and Educational Details

Employee Name	@IITD Since	Department & Designation
GEETAM TEWARI	1990	Civil Engineering , Professor

Degree	Specialization	Institute/University	Year
B.Tech.	Architecture	University of Roorkee, India	1980
M.Tech.	Transport planning and POlicy	University of Illinois at Chicago, USA	1984
Ph.D.	Transport Planning and Policy	University of Illinois at Chicago, USA	1987

Research Areas and Highlights

Transportation Planning, Highway safety audit, Highway Traffic safety

Urban Travel demand modelling, Mobility and access planning, Planning of Public Transport Systems, Pedestrian and Bicycle infrastructure planning, Urban Traffic Safety

Experience

I have about 25 years of professional experience in the areas of Transport Planning, and Traffic Engineering in India ,USA and Bangladesh and African Countries. I have been teaching transpot planning and modelling, traffic engineering, geometric design of highways and Transport Economics at graduate and undergraduate level at the Indian Institute of Technology in Delhi since 1990. I have been involved in interdisciplinary research including traffic safety, public transport systems since 1997 as member of Transportation Research and Injury Prevention Programme at IIT Delhi. I have taught short term courses in Australia, The Netherlands,Iran and South Africa,Thailand and Uganda. I have extensive research experience in dealing with transportation issues of special relevance to low income countries. These include development of systems and designs that would make transportation efficient, safer and less polluting with a special focus on vulnerable road users and commuters.

Teaching Experience

25 Years, 5 Months

Industrial Experience

1 Years, 5 Months

Significant Publications

- Tiwari, G. J. Fazio, S. Gaurav, N. Chatterjee,(2008) Continuity Equation validation for nonhomogeneous traffic, Journal of Transportation Engineering, vol 134/no.3, ASCE, March , Journal , International
- G.Tiwari, Planning for Non-Motorized Traffic- A prerequisite for Sustainable Transport System, IATSS Research, Vol.23 No.2, 1999. , Journal , International
- D.Mohan and G.Tiwari, Mobility,Environment and Safety in Megacities-Dealing with a complex future, IATSS Research Vol.24, No.1, 2000. , Journal , International
- G.Tiwari, Urban Transport Priorities: Meeting the Challenge of Socio-Economic Diversity in Cities Cities, June 2002. , Journal , International
- Anand A. and G.Tiwari, 2005. A gendered perspective of the shelter-transport-livelihood link: The case of poor women in Delhi, Transport Reviews, Transport Reviews vol26, No.1, pp63-80 , Journal , International
- Tiwari, G. Bangdiwala, Arvind Saraswat, Sushant Gaurav, Pedestrian Risk Exposure at Signalized Intersections Using Survival Analysis,

Transportation Research Part F, 2006 , Journal , International

- Patanker M Vaishali, Rakesh Kumar and Geetam Tiwari, Impacts of Bus Rapid Transit Lanes on Traffic and Commuter Mobility, Journal of Urban Planning and Development, ASCE, vol 133, Issue 2, June 1, 2007 , Journal , International
- Woodcock J, Edwards P, Tonne C. G. Tiwari, et al. (2009) Public health benefits of strategies to reduce greenhouse-gas emissions: urban land transport. The Lancet, 2009DOI:10.1016/S0140-6736(09)61714-1 , Journal , International
- Gupta, U., G.Tiwari, N.Chatterjee, J.Fazio,(2010) Case Study of Pedestrian Risk Behavior and Survival Analysis, Journal of the Eastern Asia Society for Transportation Studies, Vol.8, 2010 , Journal , International
- Thynell, M., G.Tiwari, D.Mohan, (2010) Sustainable Transport and the Modernisation of Urban Transport in Delhi and Stockholm , Cities , Journal , International
- Sen, A., G.Tiwari, V.Upadhaya, (2010), Estimating marginal external cost of transport in Delhi, Journal of Transport Policy, vol. 17, 27-37 , Journal , International
- GADEPALLI , S. B. Ravi, Geetam TIWARI(2011) Evaluating the Impact of Free Left Turns on Traffic Behavior at Signalized Intersections in Heterogeneous Traffic Conditions , Journal of the Eastern Asia Society for Transportation Studies , Vol. 9 (2011) , 1700-1714 , Journal , International
- Tiwari,G, Mariya KHATOON, Niharika SINGH, Prateek CHOUDHARY, Joseph FAZIO(2011), Modification of a Highway Capacity Manual Model for Evaluation of Capacity and Level of Service at a Signalized Intersection in India , Journal of the Eastern Asia Society for Transportation Studies , Vol. 9 (2011) , 1558-1571 , Journal , International
- Tiwari, G. & Jain, D. (2012) Accessibility and safety indicators for all road users: case study Delhi BRT. Journal of Transport Geography, 22, 87-95. , Journal , International
- Khatoon, M, G. Tiwari, N. Chatterjee(2013) Impactof grade separator on pedestrian risk taking behavior, Accident Analysis and prevention, vol 50, pp 861-870 , Journal , International
- Suman, H.K., Bolia, N.B. and Tiwari, G., 2017. Comparing public bus transport service attributes in Delhi and Mumbai: Policy implications for improving bus services in Delhi. Transport Policy, 56, pp.63-74. , Journal , International
- Stevenson, M., Thompson, J., de Sá, T.H., Ewing, R., Mohan, D., McClure, R., Roberts, I., Tiwari, G., Giles-Corti, B., Sun, X. and Wallace, M., 2016. Land use, transport, and population health: estimating the health benefits of compact cities. The lancet, 388(10062), pp.2925-2935. , Journal , International
- Tiwari, G., Jain, D. and Rao, K.R., 2016. Impact of public transport and non-motorized transport infrastructure on travel mode shares, energy, emissions and safety: Case of Indian cities. Transportation research part D: transport and environment, 44, pp.277-291. , Journal , International
- Goel, R. and Tiwari, G., 2016. Access–egress and other travel characteristics of metro users in Delhi and its satellite cities. IATSS Research, 39(2), pp.164-172. , Journal , International
- Jain, D. and Tiwari, G., 2017. Sustainable mobility indicators for Indian cities: Selection methodology and application. Ecological Indicators, 79, pp.310-322. , Journal , International
- Mohan, D., Tiwari, G. and Mukherjee, S., 2016. Urban traffic safety assessment: a case study of six Indian cities. IATSS research, 39(2), pp.95-101. , Journal , International
- Suman, H.K., Bolia, N.B. and Tiwari, G., 2017. Comparing public bus transport service attributes in Delhi and Mumbai: Policy implications for improving bus services in Delhi. Transport Policy, 56, pp.63-74. , Journal , International
- Bhalla, K., Khurana, N., Bose, D., Navaratne, K.V., Tiwari, G. and Mohan, D., 2017. Official government statistics of road traffic deaths in India under-represent pedestrians and motorised two wheeler riders. Injury prevention, 23(1), pp.1-7. , Journal , International

Academic and Research Contributions

Research Guidance (Total Nos. & Last 5 Years Data)

Category	Guidance Status	Total Guidance	In last 5 years
Ph.D.	Completed	12	6

Sponsored Research, Consultancy & Technology Development

Category	Total Projects	Total Value
Sponsored Research Projects	6	22000000
Consultancy	20	9000000

Type of Publication	Level of Publication	Total Publication	In last 5 years
Journal	International	70	40
Books Edited	International	4	1
Journal	National	14	2
Books Chapter	International	13	2

Patent & IPR

Course Name	L-T-P	Course Belongs To
URBAN & REGIONAL TRANSPORTATION PLANNING	2-0-0	PG
PUBLIC TRANSPORTATION SYSTEMS	3-0-0	PG
MAJOR PROJECT PART-I	0-0-12	PG
MAJOR PROJECT PART-I	0-0-12	PG
TRANSPORTATION & TRAFFIC INFRASTRUCTURE DESIGN	3-0-0	PG
MAJOR PROJECT PART-II	0-0-24	PG
MAJOR PROJECT PART-II	0-0-24	PG
ADVANCED TRANSPORTATION MODELLING	2-0-2	PG
TRANSPORTATION ECONOMICS & FINANCE	3-0-0	PG

Awards & Distinctions

- International Velocity Falco Lecture 2nd Prize, Barcelona, Spain,
- IRTE & Prince Michael International Road Safety Award 2002 for "extraordinary contribution toward road safety in India."
- the Stockholm Partnerships Award for local impact, innovative thinking and a potential for replication or transferability for establishing Transportation Research and Injury Prevention Programme at th
- Lucknow Management Association woman's achiever award for 2010.
- Adlerbretska Guest Professor for sustainable development at the Chalmers Institute of Technology, Gothenborg 2007-2010.
- Honorary Doctor of technology from Chalmers University of technology May 2012.

Society Membership, Certification & Training & Any Other Details

- Editor in Chief, International Journal of Injury Control and Safety promotion, Taylor and Francis publication, U.K. 2009-present
- Member , H1 committee(Traffic and Transport Planning), Indian Roads Congress
Member Secretary , H-7 committee(Safety) Indian Roads Congress
- Executive Board member Transport Research Group, India
- Member International Scientific Committee EASTS(Easts Asia Society for Transport Studies, Japan)
- Member, Institute of Urban Transport, India
- Senate NIT Hamirpur: Invited member
Senate IP University: Invited member
- Member Editorial Board Journal of Safety Research
- Member, Board of Directors,Urban Mass Transport Company (IL&FS and MUD, Government of India) since 2006

Promoter and Chairperson Board of Directors, Innovative Transport Solutions Ltd, an IITD TBUI,

-

Member Board of Directors LEAD India(An international nongovernmental organization of sustainable environment leadership

- Member, Board of Directors, SLoCAT, international NGO for Sustainable Low Carbon Active Transport
- member, editorial Board, IATSS Journal
- Member, Board of Advisors, IATSS Forum
- Member, Editorial Board, Journal of Transport and Health